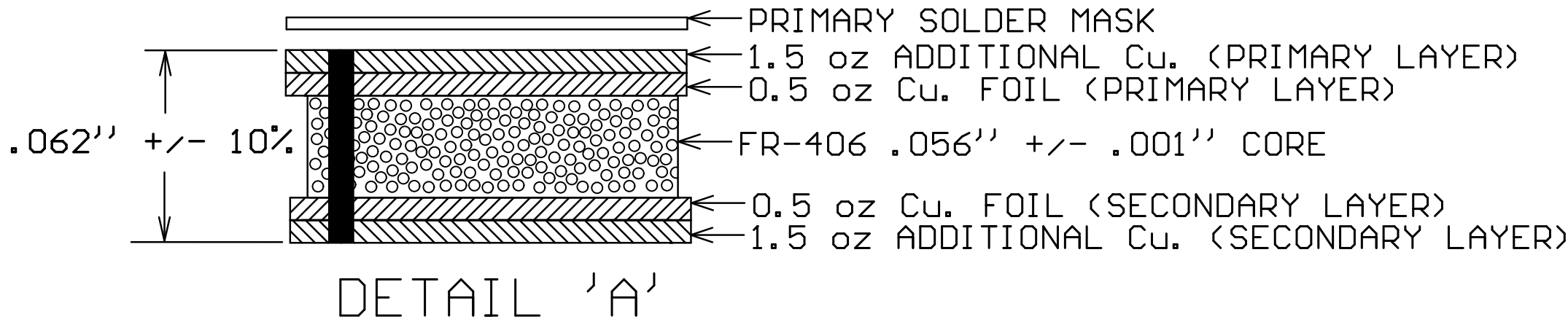


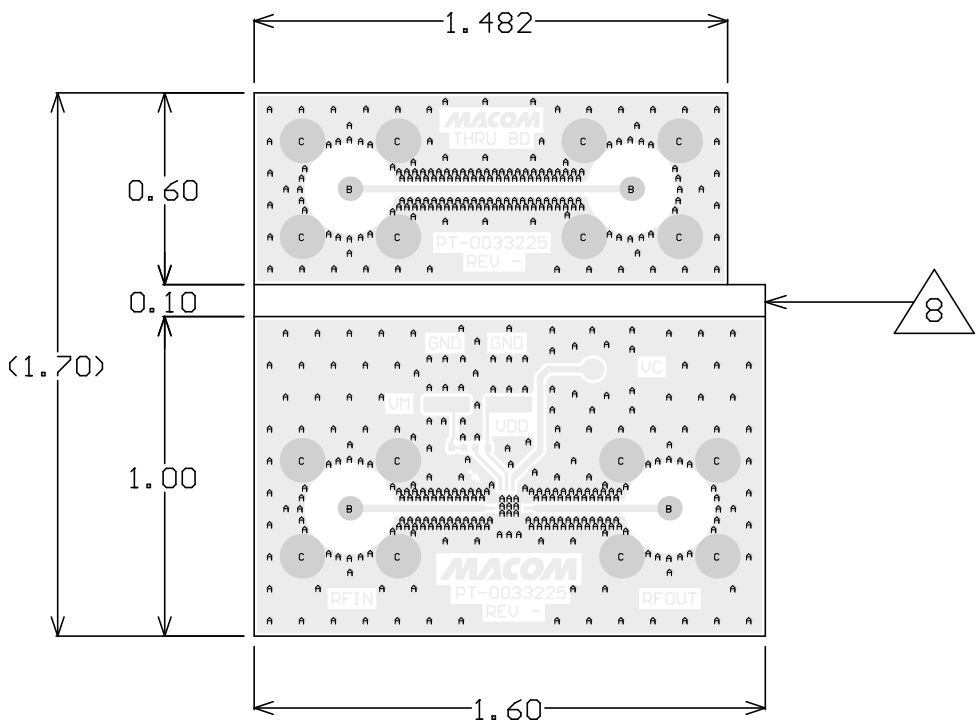
BOARD DIELECTRIC / COPPER STACKUP  
FINISHED BOARD THICKNESS  
(EXCLUDING PRIMARY SOLDERMASK)



Symbol	Count	FHS	Tolerance	Plated	Hole Type	Drill Layer Pair
A	449	10.00mil	+3/-10mil	PTH	Round	Top Layer - Bottom Layer
B	4	46.85mil	+/-3mil	PTH	Round	Top Layer - Bottom Layer
C	16	92.91mil	+/-3mil	PTH	Round	Top Layer - Bottom Layer
	469 Total					

NOTES:

- MATERIAL: FR-406 DIELETRIC, .056'' THICK CORE.  
STARTING COPPER FOIL SHALL BE 1/2 OZ.  
COPPER ON PRIMARY AND SECONDARY SHALL BE PLATED UP AN ADDITIONAL 1.5 OZ.  
MATERIAL STACKUP, THICKNESS, AND STARTING COPPER FOIL PER DETAIL 'A'
- FINISH: PRIMARY AND SECONDARY SIDE FINISH;  
ELECTROLESS NICKEL/IMMERSION GOLD (ENIG) PER IPC-4552.  
ELECTROLESS NICKEL: 118-236 MICRO-INCHES  
IMMERSION GOLD: 2-8 MICRO-INCHES  
THERE SHALL BE NO PITS, PIN HOLES, SCRATCHES OR NODULES WITHIN EXPOSED METAL AREAS  
STACKUP REPRESENTS FINISHED THICKNESS.
- PCB SHALL BE BUILT PER IPC-6012 CLASS 2 AND CONFORM TO IPC-A-600 CLASS 2 LATEST REVISIONS
- HOLE SPECIFICATIONS:  
A. ALL HOLES TO BE PLATED THRU UNLESS OTHERWISE SPECIFIED.  
B. ALL FINISHED DRILL HOLE SIZES APPLY AFTER PLATING.  
C. ALL 10 MIL FHS TO BE FILLED WITH CONDUCTIVE VIA MATERIAL, CAPPED OVER, AND PLANARIZE FLAT.  
D. COPPER PLATING IN THROUGH HOLES WILL BE 0.002'' AVERAGE WITH AN ABSOLUTE MINIMUM OF 0.0018''.  
E. DIMENSIONS SHOWN ARE FOR LOCATION OF 0,0 FOR THE DRILL FILE.
- MINIMUM LINE WIDTH AND SPACING SHALL BE 0.005''. ALL LINE WIDTHS ARE +/- .001''.
- ELECTRONIC DATA IS EQUAL TO THE FINISHED LINE WIDTH.
- NO SILKSCREEN ON PCB.
- BOARDS SHALL BE ROUTED OUT AND SHIPPED SEPARATELY.
- LPI SOLDER MASK COATING SHALL CONFORM TO IPC-SM-840, CLASS T. SMOBC. PRIMARY SIDE ONLY. COLOR GREEN.
- ALL CPWG LINES ON LAYER 1 ARE CONTROLLED IMPEDANCE. A 23.0 MIL LINE WIDTH WITH A GAP OF 13 MIL SHALL BE 75 OHMS +/-5% WITH REFERENCE TO THE GND PLANE WITH A DISTANCE OF 56 MIL FROM SECONDARY LAYER. VENDOR SHALL ADJUST TRACE WIDTH ON PRIMARY LAYER TO MEET 75 OHM IMPEDANCE.
- ALL MATERIALS DESCRIBED IN THIS DOCUMENT/DRAWING SHALL BE IN COMPLIANCE WITH AND CONTAIN NO SUBSTANCES RESTRICTED OR REQUIRING SPECIAL RECLAMATION UNDER THE LATEST RoHS, WEEE OR ELV DIRECTIVES.



Primary Layer

X	MAAU-011018
NEXT ASSY	USED ON
APPLICATION	

<div>UNLESS OTHERWISE SPECIFIED INTERPRET DRAWING PER ASME Y14.5 DO NOT SCALE THIS DRAWING</div>	<div>UNLESS OTHERWISE SPECIFIED DIMENSIONS ARE IN INCHES</div>		<div>MACOM®</div> <div>WWW.MACOM.COM</div>		
	<div>TOLERANCES ON</div>				
	<div>DECIMALS</div>	<div>ANGLES</div>			
<div>NOTE: THIS DRW INCORPORATES THIRD ANGLE PROJECTION</div>	<div>.X ± .1 .XX ± .02 .XXX ± .005 .XXXX ± .0005</div>		<div>± 0.5</div>	<div>TITLE</div> <div>PRINTED BOARD, SMB, MAAV-011018</div>	
<div>MACOM Technology Solutions CONFIDENTIAL INFORMATION SUBJECT TO NDA</div>					
<div>The information contained in this document or material is the valuable and confidential property of MACOM Technology Solutions Holdings, Inc. and/or its subsidiaries or affiliates. Collectively, MACOM, provided to you subject to a non-disclosure agreement between you and MACOM solely for use in supporting MACOM's business as and to the extent MACOM authorizes in writing from time to time. This information shall be held in strictest confidence and shall not be reproduced, published, disclosed to others, or used for any purpose except as and to the extent specifically authorized by MACOM in a separate written agreement. Permission is granted for reproduction, this legend must be included in any and all copies. This document or material shall be promptly returned to MACOM or destroyed upon request, completion of the use for which it was made available to recipient, or termination of MACOM's relationship with recipient, whichever first occurs.</div>					
<div>UNLESS OTHERWISE SPECIFIED 63/ ALL OVER</div>			<div>SIZE</div>	<div>DRAWING NO.</div>	<div>REVISION</div>
<div>MATERIAL</div>			<div>B</div>	<div>PT-0033225</div>	<div>-1</div>
<div>SEE NOTE 1</div>					
<div>FINISH</div>			<div>SCALE:</div>	<div>PACKAGE TYPE:</div>	<div>SHEET</div>
<div>SEE NOTE 2</div>			<div>1/1</div>	<div>3mmPQFN50P-16LD</div>	<div>1 OF 1</div>